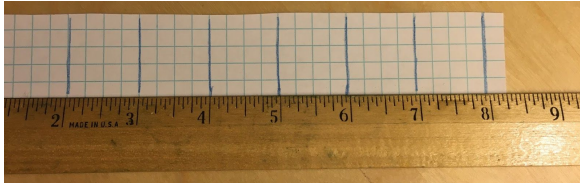


Name: _____ Date: _____

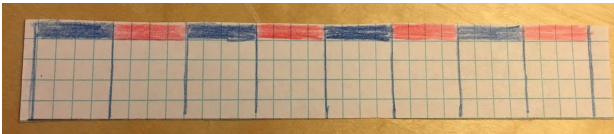
Making a Colorband Ruler

You will create your own Colorband Ruler and use it along with a standard inch ruler to help you measure items.

Whole Inches

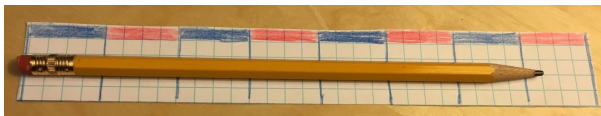


1. Take your graph paper strip and draw a **blue** line every 1 inch.
(You can cut off partial ends)



2. On the top row of squares, color every other 1 inch section **blue and red**.

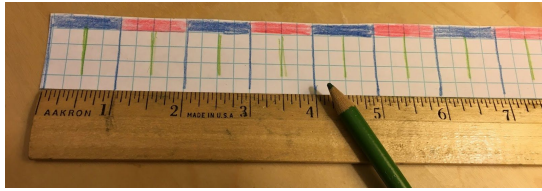
How many small squares long is each 1 inch section? _____



3. Measure your pencil to the “closest” or “nearest” whole inch.

My pencil measures _____ whole inches.

Half Inches ($\frac{1}{2}$ in.)



1. On the next row of squares, draw a **green line** one half way between each inch (measure $\frac{1}{2}$ -inch increments, or 2 squares per inch.)



2. Color every other $\frac{1}{2}$ -inch segment **green and orange**.

3. Match up the green and orange parts of your Colorband Ruler strip to your standard ruler.

Can you find the $\frac{1}{2}$ -inch marks on the ruler?



4. Measure your pencil to the nearest $\frac{1}{2}$ inch.

My pencil measures _____ inches.

Write as a whole number and a fraction (mixed number), if needed.

Could it be at the whole inch mark?
_____ (yes or no).

Discuss with your partner why.

